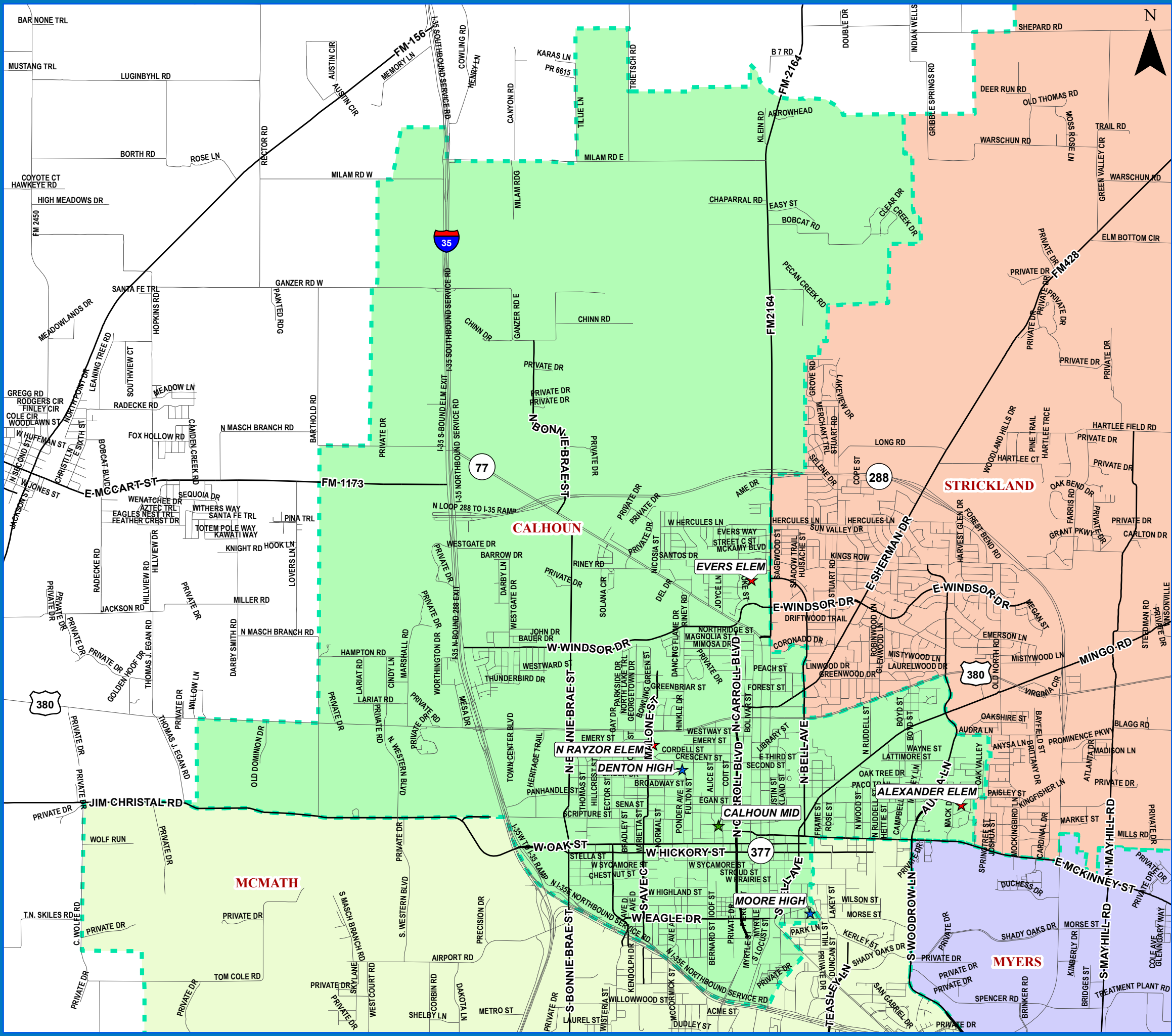


DENTON INDEPENDENT SCHOOL DISTRICT

CALHOUN MIDDLE SCHOOL ATTENDANCE ZONE

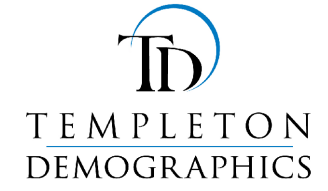
2021-22



- Schools**
- ★ Elementary School
 - ★ Middle School
 - ★ High School
 - ★ Alternative
- Roads**
- Local Roads
 - Major Arterial
 - Secondary Highway
 - Primary Highway
- Lake Lewisville**
- Lake Lewisville

Middle Boundaries

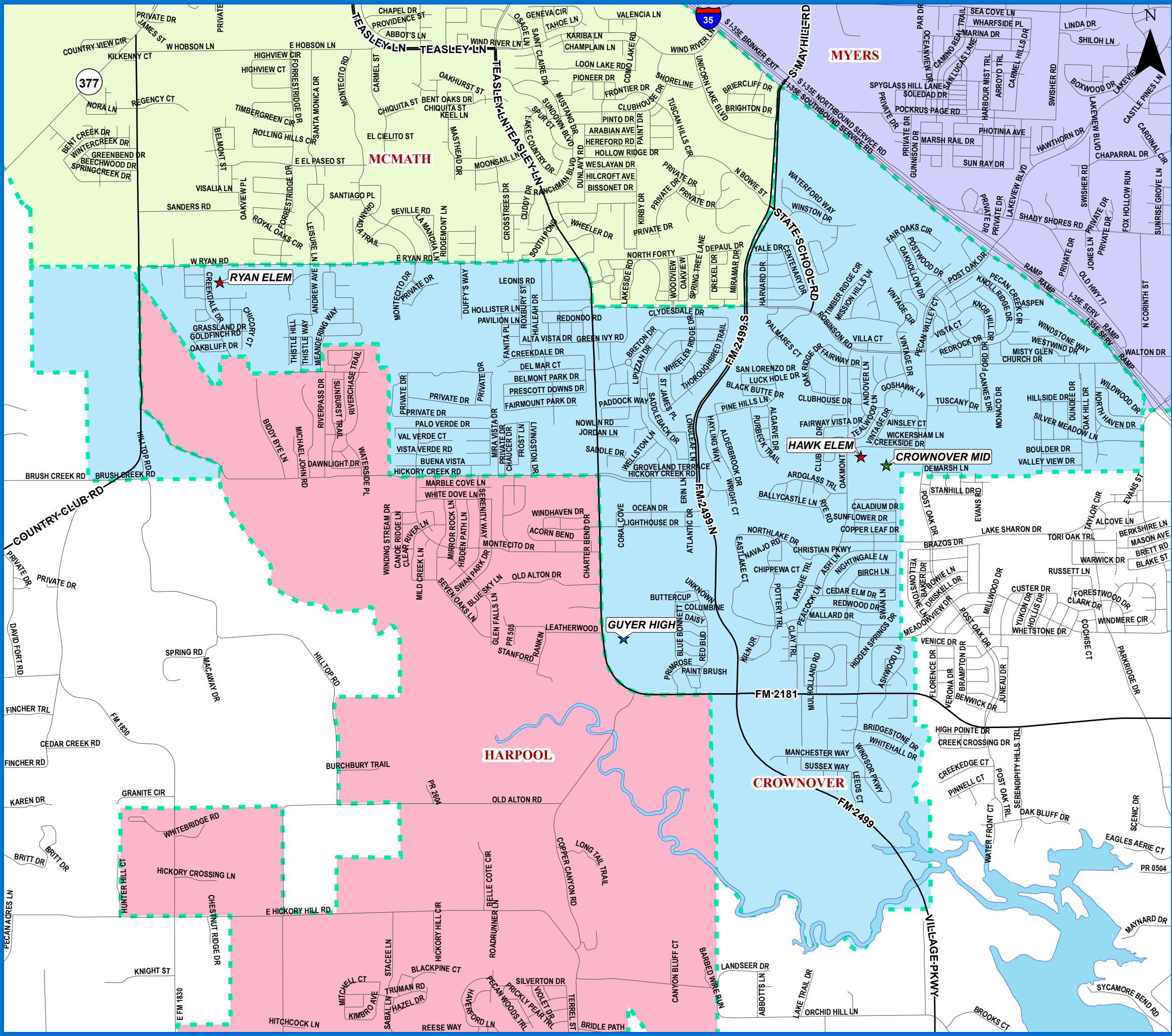
CALHOUN	709 CONGRESS ST, DENTON, TX 76201	(940)369-2400
CROWNOVER	1901 CREEKSIDE DR, CORINTH, TX 76210	(940)369-4700
HARPOOL	9601 STACEE LANE, ARGYLE, TX 6226	(940)369-1700
MCMATH	1900 JASON DRIVE, DENTON, TX 76205	(940)369-3300
MYERS	131 GARZA RD, SHADY SHORES, TX 76208	(940)369-1500
NAVO	1701 NAVO RD, AUBREY, TX 76227	(972)347-7500
RODRIGUEZ	8650 MARTOP RD, OAK POINT, TX 76227	(940)367-7050
STRICKLAND	324 E WINDSOR DR, DENTON, TX 76209	(940)369-4200



DENTON INDEPENDENT SCHOOL DISTRICT

CROWNOVER MIDDLE SCHOOL ATTENDANCE ZONE

2021-22



- Schools**
- ★ Elementary School
 - ★ Middle School
 - ★ High School
 - ★ Alternative
- Roads**
- Local Roads
 - Major Arterial
 - Secondary Highway
 - Primary Highway
- Lake Lewisville**
- Lake Lewisville

Middle Boundaries

CALHOUN	709 CONGRESS ST, DENTON, TX 76201	(940)369-2400
CROWNOVER	1901 CREEKSIDE DR, CORINTH, TX 76210	(940)369-4700
HARPOOL	9601 STACEE LANE, ARGYLE, TX 6226	(940)369-1700
MCMATH	1900 JASON DRIVE, DENTON, TX 76205	(940)369-3300
MYERS	131 GARZA RD, SHADY SHORES, TX 76208	(940)369-1500
NAVO	1701 NAVO RD, AUBREY, TX 76227	(972)347-7500
RODRIGUEZ	8650 MARTOP RD, OAK POINT, TX 76227	(940)367-7050
STRICKLAND	324 E WINDSOR DR, DENTON, TX 76209	(940)369-4200



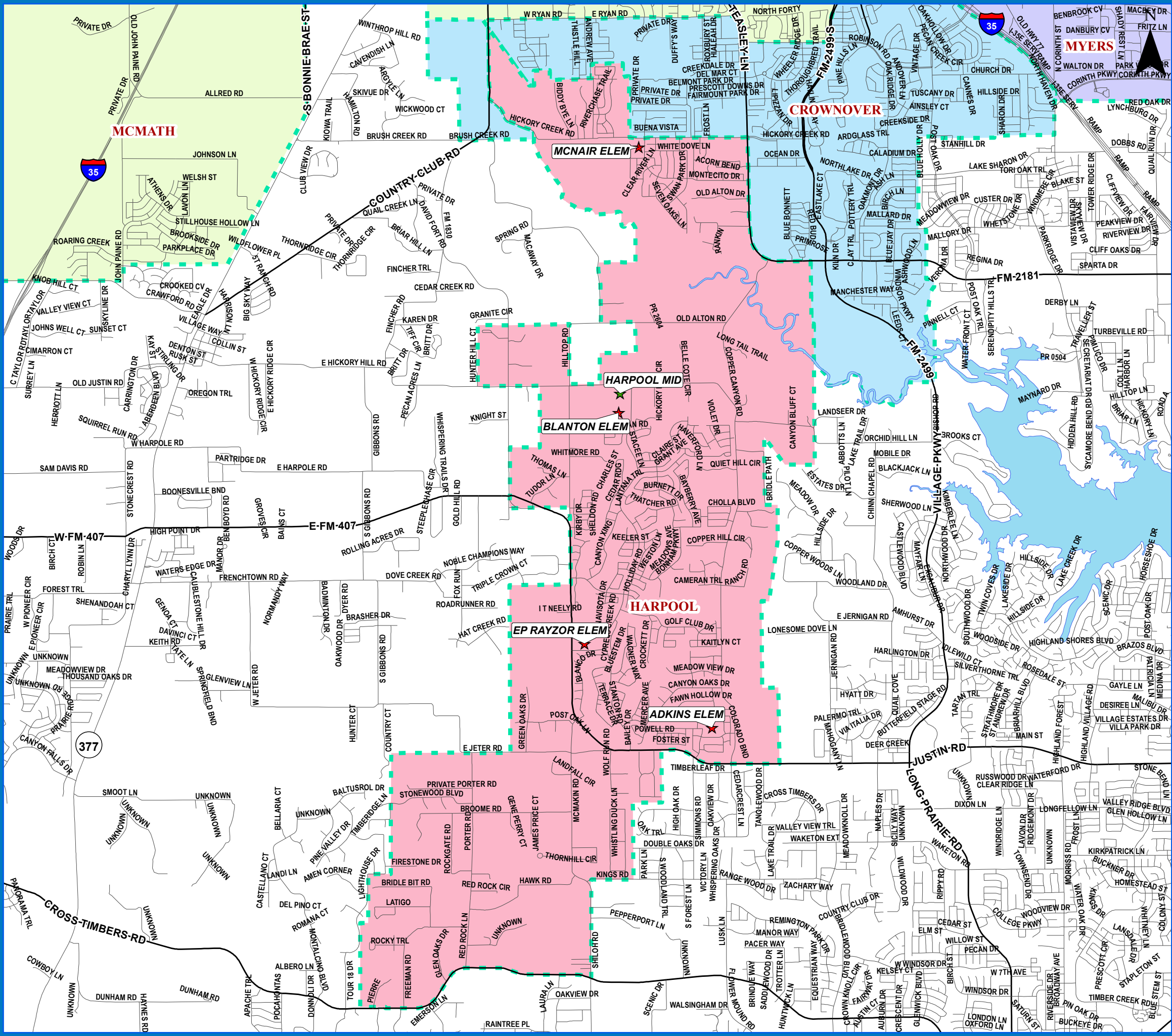
TEMPLETON
DEMOGRAPHICS



DENTON INDEPENDENT SCHOOL DISTRICT

HARPOOL MIDDLE SCHOOL ATTENDANCE ZONE

2021-22



- Schools**
- ★ Elementary School
 - ★ Middle School
 - ★ High School
 - ★ Alternative
- Roads**
- Local Roads
 - Major Arterial
 - Secondary Highway
 - Primary Highway
- Lake Lewisville**
- Lake Lewisville

Middle Boundaries

CALHOUN	709 CONGRESS ST, DENTON, TX 76201	(940)369-2400
CROWNOVER	1901 CREEKSIDE DR, CORINTH, TX 76210	(940)369-4700
HARPOOL	9601 STACEE LANE, ARGYLE, TX 6226	(940)369-1700
MCMATH	1900 JASON DRIVE, DENTON, TX 76205	(940)369-3300
MYERS	131 GARZA RD, SHADY SHORES, TX 76208	(940)369-1500
NAVO	1701 NAVO RD, AUBREY, TX 76227	(972)347-7500
RODRIGUEZ	8650 MARTOP RD, OAK POINT, TX 76227	(940)367-7050
STRICKLAND	324 E WINDSOR DR, DENTON, TX 76209	(940)369-4200



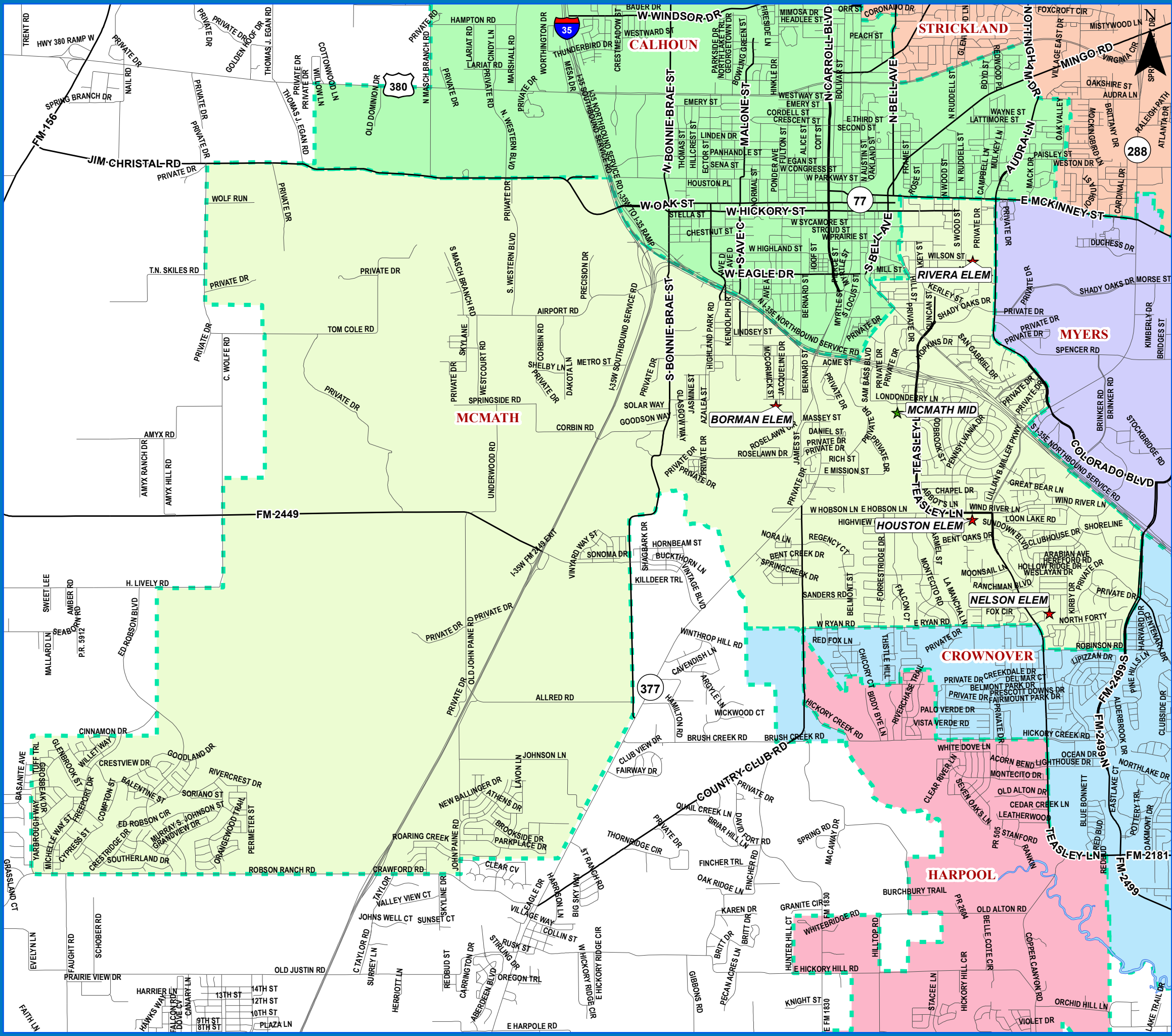
TEMPLETON
DEMOGRAPHICS



DENTON INDEPENDENT SCHOOL DISTRICT

MCMATH MIDDLE SCHOOL ATTENDANCE ZONE

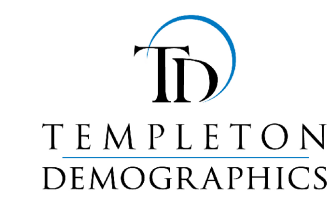
2021-22



- Schools**
- ★ Elementary School
 - ★ Middle School
 - ★ High School
 - ★ Alternative
- Roads**
- Local Roads
 - Major Arterial
 - Secondary Highway
 - Primary Highway
- Lake Lewisville**
- Lake Lewisville

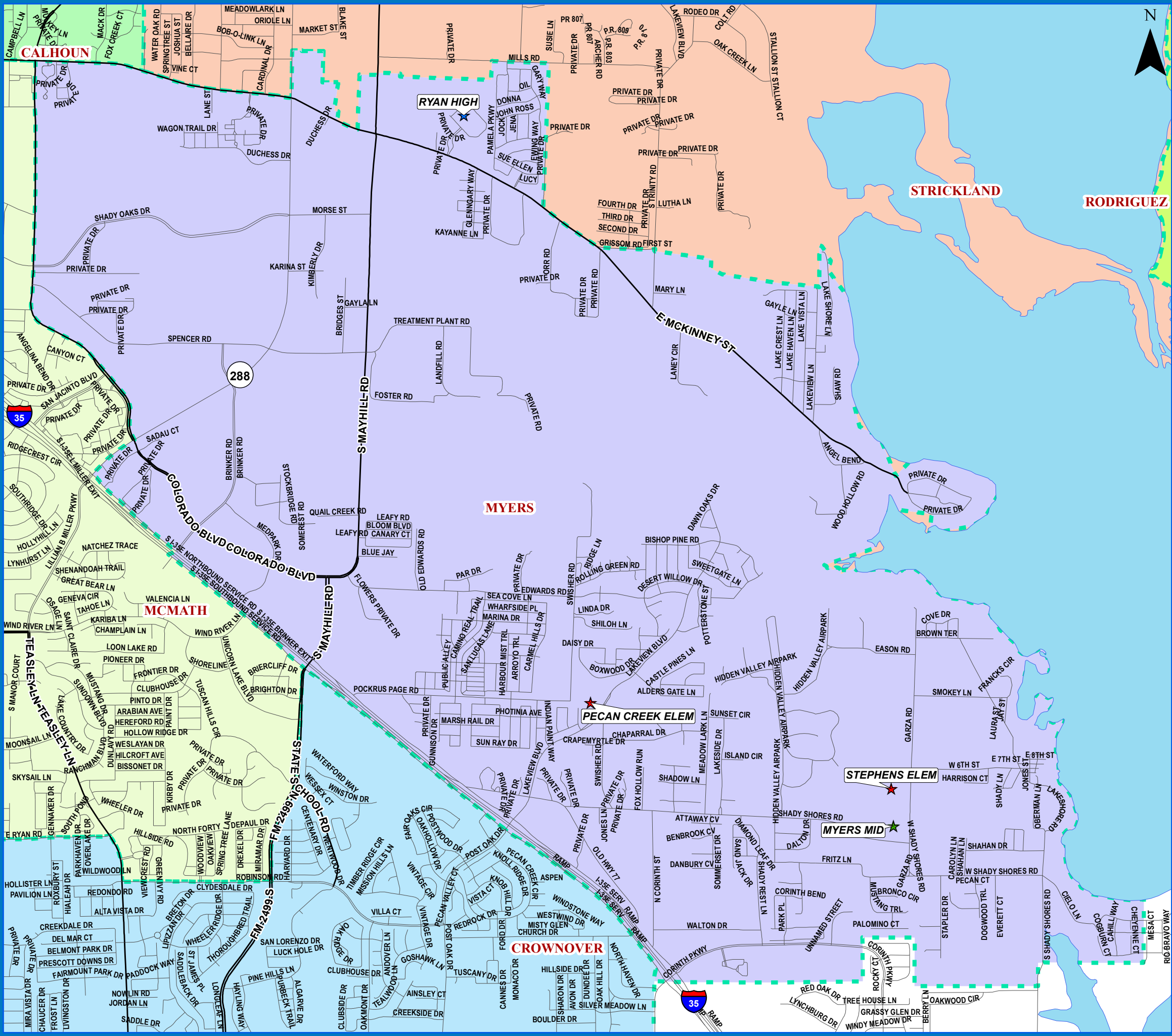
Middle Boundaries

CALHOUN	709 CONGRESS ST, DENTON, TX 76201	(940)369-2400
CROWNOVER	1901 CREEKSIDE DR, CORINTH, TX 76210	(940)369-4700
HARPOOL	9601 STACEE LANE, ARGYLE, TX 6226	(940)369-1700
MCMATH	1900 JASON DRIVE, DENTON, TX 76205	(940)369-3300
MYERS	131 GARZA RD, SHADY SHORES, TX 76208	(940)369-1500
NAVO	1701 NAVO RD, AUBREY, TX 76227	(972)347-7500
RODRIGUEZ	8650 MARTOP RD, OAK POINT, TX 76227	(940)367-7050
STRICKLAND	324 E WINDSOR DR, DENTON, TX 76209	(940)369-4200



DENTON INDEPENDENT SCHOOL DISTRICT

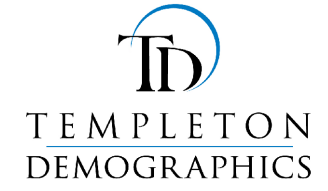
MYERS MIDDLE SCHOOL ATTENDANCE ZONE 2021-22



- | Schools | Roads | Lake Lewisville |
|---------------------|---------------------|-------------------|
| ★ Elementary School | — Local Roads | □ Lake Lewisville |
| ★ Middle School | — Major Arterial | |
| ★ High School | — Secondary Highway | |
| ★ Alternative | — Primary Highway | |

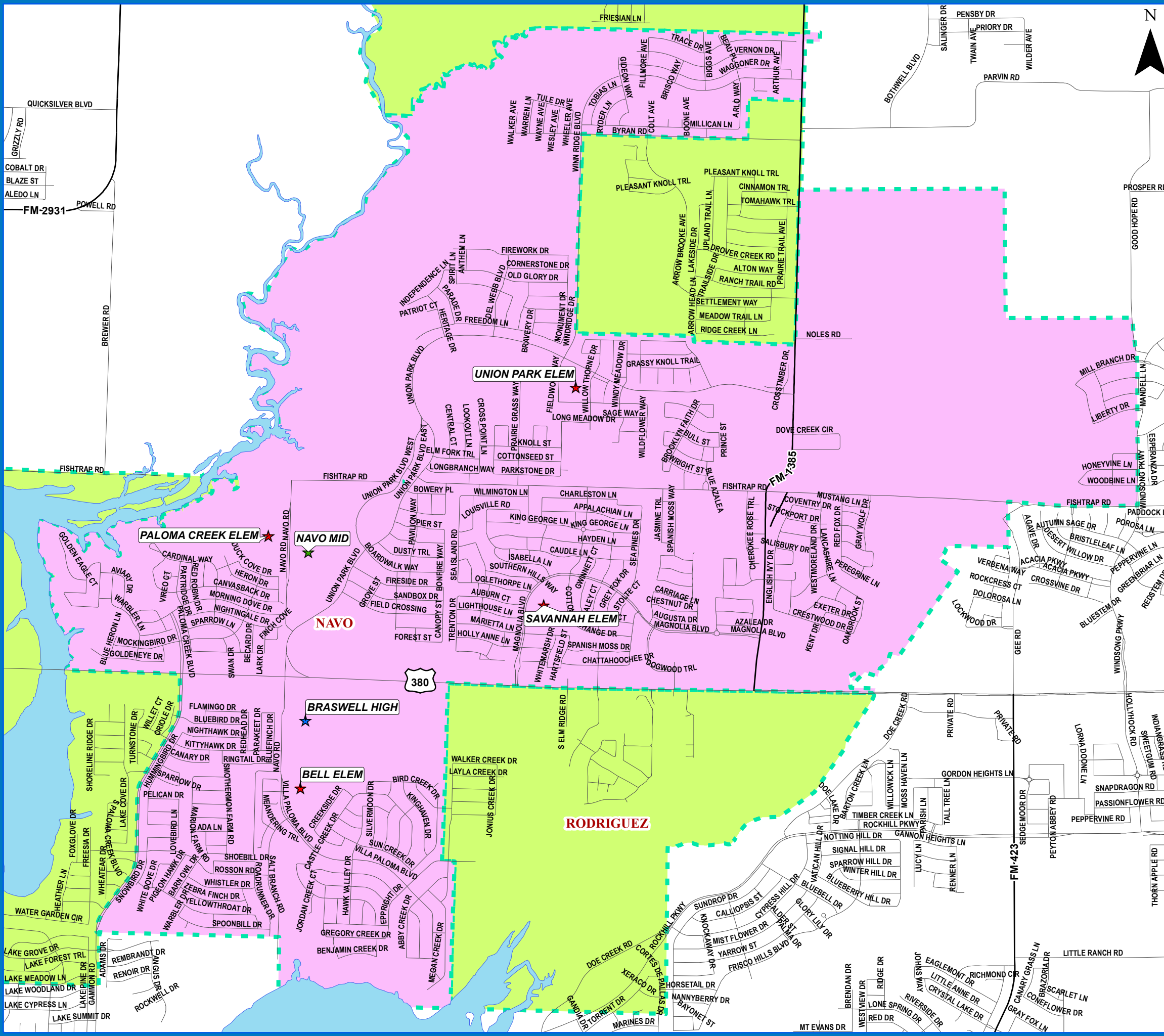
Middle Boundaries

	CALHOUN	709 CONGRESS ST, DENTON, TX 76201	(940)369-2400
	CROWNOVER	1901 CREEKSIDE DR, CORINTH, TX 76210	(940)369-4700
	HARPOOL	9601 STACEE LANE, ARGYLE, TX 6226	(940)369-1700
	MCMATH	1900 JASON DRIVE, DENTON, TX 76205	(940)369-3300
	MYERS	131 GARZA RD, SHADY SHORES, TX 76208	(940)369-1500
	NAVO	1701 NAVO RD, AUBREY, TX 76227	(972)347-7500
	RODRIGUEZ	8650 MARTOP RD, OAK POINT, TX 76227	(940)367-7050
	STRICKLAND	324 E WINDSOR DR, DENTON, TX 76209	(940)369-4200



DENTON INDEPENDENT SCHOOL DISTRICT

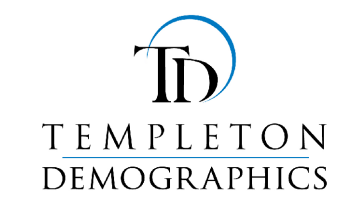
NAVO MIDDLE SCHOOL ATTENDANCE ZONE 2021-22



- Schools**
- ★ Elementary School
 - ★ Middle School
 - ★ High School
 - ★ Alternative
- Roads**
- Local Roads
 - Major Arterial
 - Secondary Highway
 - Primary Highway
- Lake Lewisville**
- Lake Lewisville

Middle Boundaries

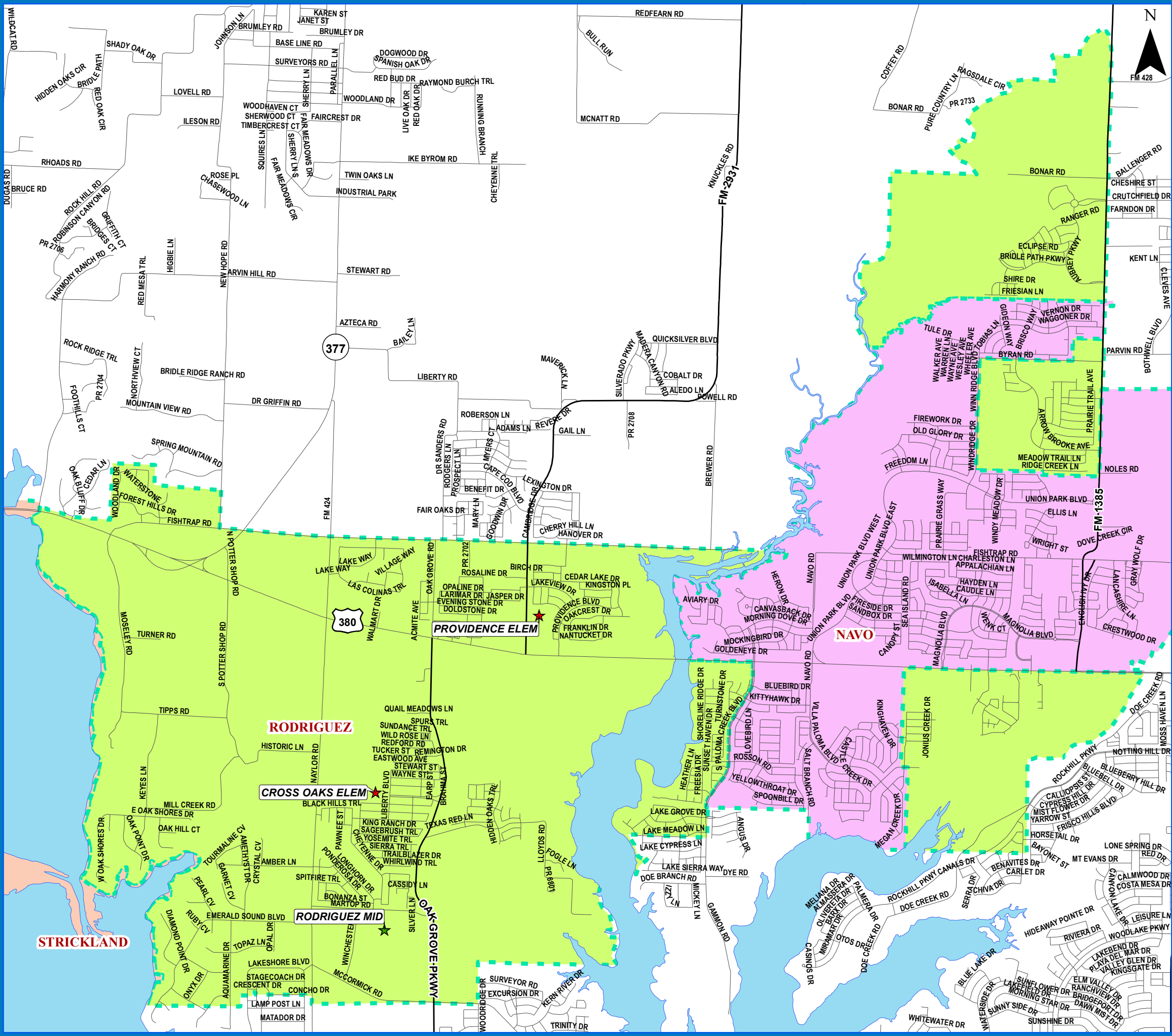
CALHOUN	709 CONGRESS ST, DENTON, TX 76201	(940)369-2400
CROWNOVER	1901 CREEKSIDE DR, CORINTH, TX 76210	(940)369-4700
HARPOOL	9601 STACEE LANE, ARGYLE, TX 6226	(940)369-1700
MCMATH	1900 JASON DRIVE, DENTON, TX 76205	(940)369-3300
MYERS	131 GARZA RD, SHADY SHORES, TX 76208	(940)369-1500
NAVO	1701 NAVO RD, AUBREY, TX 76227	(972)347-7500
RODRIGUEZ	8650 MARTOP RD, OAK POINT, TX 76227	(940)367-7050
STRICKLAND	324 E WINDSOR DR, DENTON, TX 76209	(940)369-4200



DENTON INDEPENDENT SCHOOL DISTRICT

RODRIGUEZ MIDDLE SCHOOL ATTENDANCE ZONE

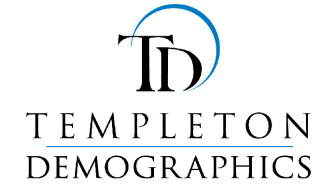
2021-22



- Schools**
- ★ Elementary School
 - ★ Middle School
 - ★ High School
 - ★ Alternative
- Roads**
- Local Roads
 - Major Arterial
 - Secondary Highway
 - Primary Highway
- Lake Lewisville**
- Lake Lewisville

Middle Boundaries

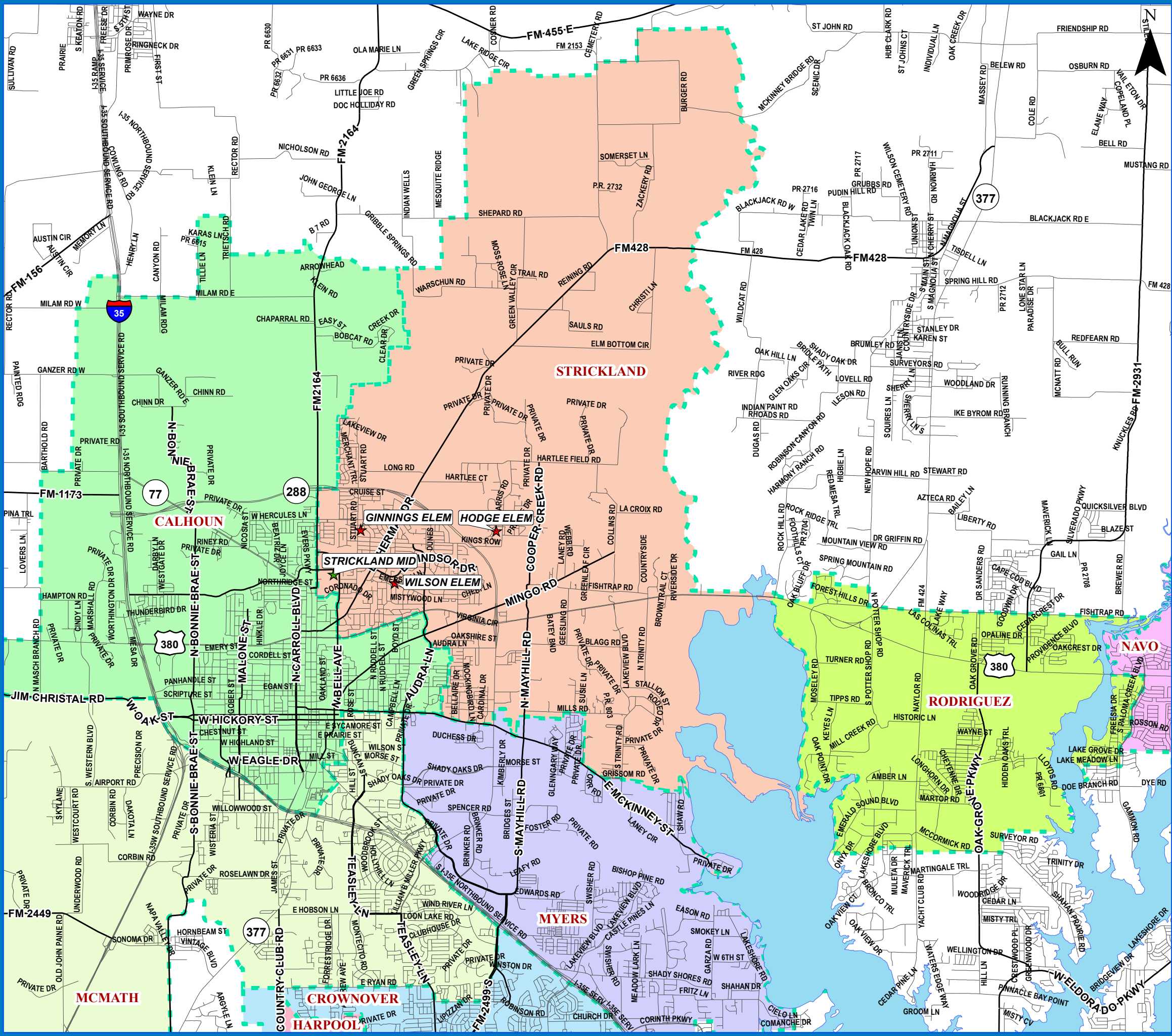
CALHOUN	709 CONGRESS ST, DENTON, TX 76201	(940)369-2400
CROWNOVER	1901 CREEKSIDE DR, CORINTH, TX 76210	(940)369-4700
HARPOOL	9601 STACEE LANE, ARGYLE, TX 6226	(940)369-1700
MCMATH	1900 JASON DRIVE, DENTON, TX 76205	(940)369-3300
MYERS	131 GARZA RD, SHADY SHORES, TX 76208	(940)369-1500
NAVO	1701 NAVO RD, AUBREY, TX 76227	(972)347-7500
RODRIGUEZ	8650 MARTOP RD, OAK POINT, TX 76227	(940)367-7050
STRICKLAND	324 E WINDSOR DR, DENTON, TX 76209	(940)369-4200



DENTON INDEPENDENT SCHOOL DISTRICT

STRICKLAND MIDDLE SCHOOL ATTENDANCE ZONE

2021-22



- Schools**
- ★ Elementary School
 - ★ Middle School
 - ★ High School
 - ★ Alternative
- Roads**
- Local Roads
 - Major Arterial
 - Secondary Highway
 - Primary Highway
- Lake Lewisville**
- Lake Lewisville

Middle Boundaries

CALHOUN	709 CONGRESS ST, DENTON, TX 76201	(940)369-2400
CROWNOVER	1901 CREEKSIDE DR, CORINTH, TX 76210	(940)369-4700
HARPOOL	9601 STACEE LANE, ARGYLE, TX 6226	(940)369-1700
MCMATH	1900 JASON DRIVE, DENTON, TX 76205	(940)369-3300
MYERS	131 GARZA RD, SHADY SHORES, TX 76208	(940)369-1500
NAVO	1701 NAVO RD, AUBREY, TX 76227	(972)347-7500
RODRIGUEZ	8650 MARTOP RD, OAK POINT, TX 76227	(940)367-7050
STRICKLAND	324 E WINDSOR DR, DENTON, TX 76209	(940)369-4200

